

Why Focus on Policy?

“The Task Force believes the **community's greatest leverage** for tackling intergenerational poverty and breaking down barriers to economic opportunity **will come from focusing on systemic and structural change** versus relying upon programmatic intervention.”

Policy is Mentioned 57 Times in the Task Force Report

- Address “damaging policy failures, such as those in housing, education, transit... criminal justice and immigration.”
- “Advocate for system and policy changes.”
- “Develop state policy agendas with other communities for larger impact and support.”

LOO's Role in Policy



We are a proxy between organizations across sectors and advocates from urban and rural communities to address needed policy interventions for improving economic mobility.

Vision



Increase access, availability, and quality of child care through local, regional and statewide advocacy.

Why Early Care and Education (ECE)?




Caregivers are unable to fully participate in the workforce

200,000 NC parents cite lack of child care as the primary barrier to employment



Current child care models are unsustainable

Costs are too high for parents and wages are too low for workers

 dy estimates the child care crisis costs North Carolina \$3.5 billion each year in lost earnings, productivity, and revenue.

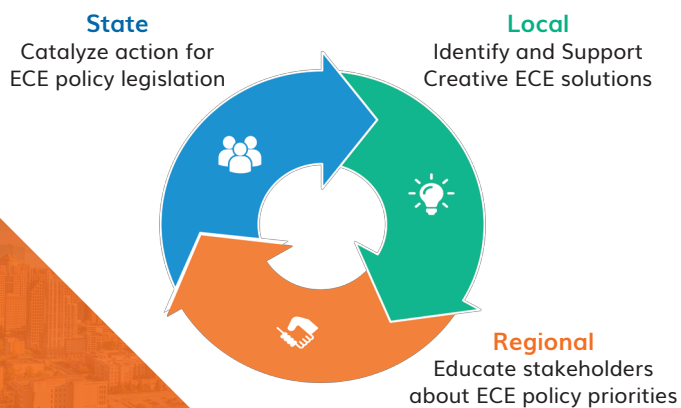


Policy Priorities




Areas for Action in Early Care and Education



Our Primary Workstreams



Our Current Approach to ECE Policy

Tactics	Examples
 Educate stakeholders about ECE policy priorities	Meetings & presentations with regional business alliances, existing coalitions, etc.; Host panel discussions
 Build support for local, creative solutions	Identify zoning changes that could expand access & availability of child care
 Catalyze action for ECE legislation	Participate in panel discussions; Contacting state legislators

How can you get involved?

- Connect us with others at your organization (i.e., lobbyist, communications, etc.)
- Follow us on social media @OpportunityCLT and attend policy events/convenings
- Talk about policy interventions! Share this information with others

For more information visit www.leadingonopportunity.org or contact tjameson@leadingonopportunity.org.

